

THE THERMAL FLUID HEATERS

GFT LINE

Standard manufacturing program
for liquids and gaseous fuels



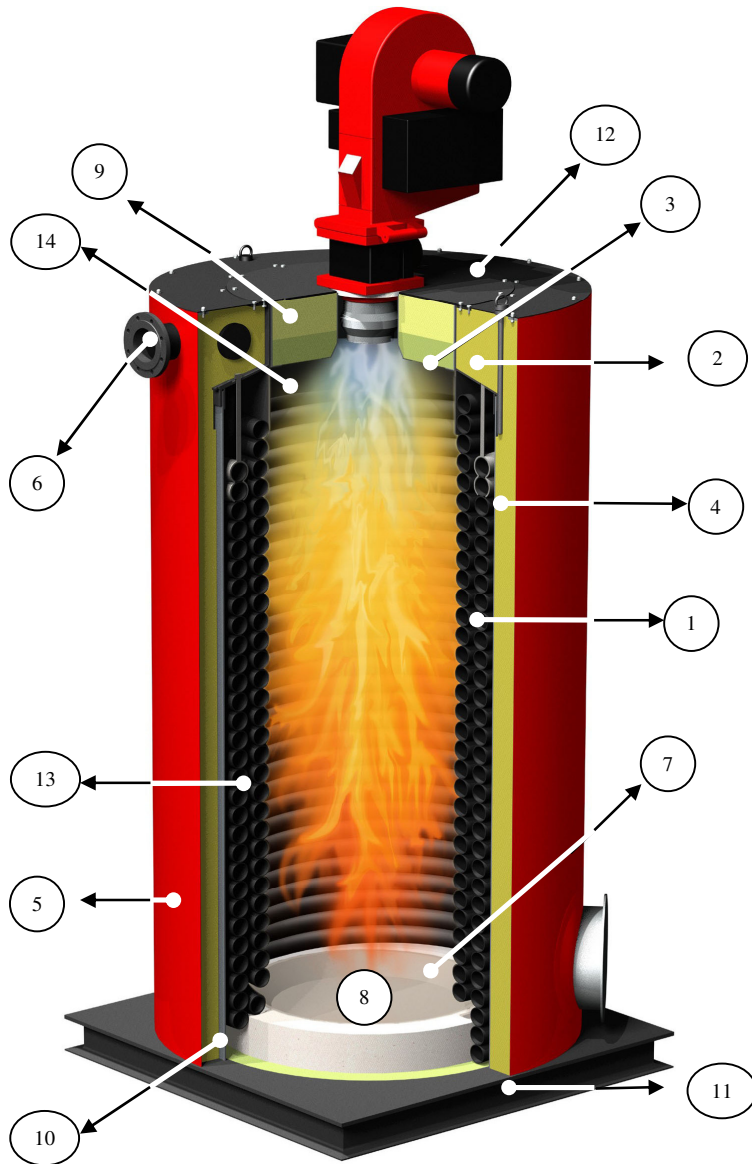
Special models for:

- Horizontal execution
- Specific thermal differentials
- Industrial laundries
- Concrete applications
- Communication with PC
- Service temperature till 400 ° C
- Glycerine as fuel
- Opening front and rear doors for cleaning.
- Other service pressures
- Combustion gases recovery
- Polishing stainless steel finish

Characteristics

- Powers between 0.1 and 15 MW
- Codes of design: AD-MERKBLÄTTER, DIN4754, EN-13445, ASME
- Marked CE
- Design pressure : 9 bar
- Max. working pressure : 7 bar
- Design temperature: 400° C
- Max. working temperature: 350° C
- Number of coils : 2
- Number of smoke passes: 3
- Thermal efficiency: 87 – 91%
- Material's quality of coils: St 35.8.1, BS 3059 , s/DIN 17175

The scheme of a thermal fluid heater



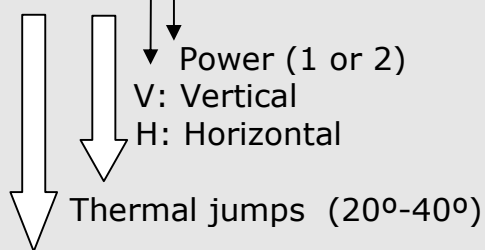
- 1 Internal coil
- 2 Coils cover
- 3 Combustion chamber's cover
- 4 Internal envelop
- 5 External envelop
- 6 Connection flanges
- 7 Combustion chamber's base
- 8 Base insulation
- 9 Ceramic fibre
- 10 Insulation
- 11 UPN profiles
- 12 Heater's lid
- 13 External coil
- 14 Closing combustion chamber

Model	Calorific power	
	kcal/h	kW
GFT-010/xx/x1	100000	116
GFT-010/xx/x2	150000	175
GFT-020/xx/x1	200000	233
GFT-020/xx/x2	300000	350
GFT-040/xx/x1	400000	465
GFT-040/xx/x2	500000	580
GFT-060/xx/x1	750000	870
GFT-060/xx/x2	850000	990
GFT-090/xx/x1	1000000	1160
GFT-090/xx/x2	1200000	1395
GFT-130/xx/x1	1400000	1625
GFT-130/xx/x2	1600000	1860
GFT-170/xx/x2	2000000	2325
GFT-200/xx/x2	2500000	2905
GFT-300/xx/x2	3000000	3488
.	.	.
.	.	.
.	.	.
GFT-1300/xx/x2	130000000	15000

Order code

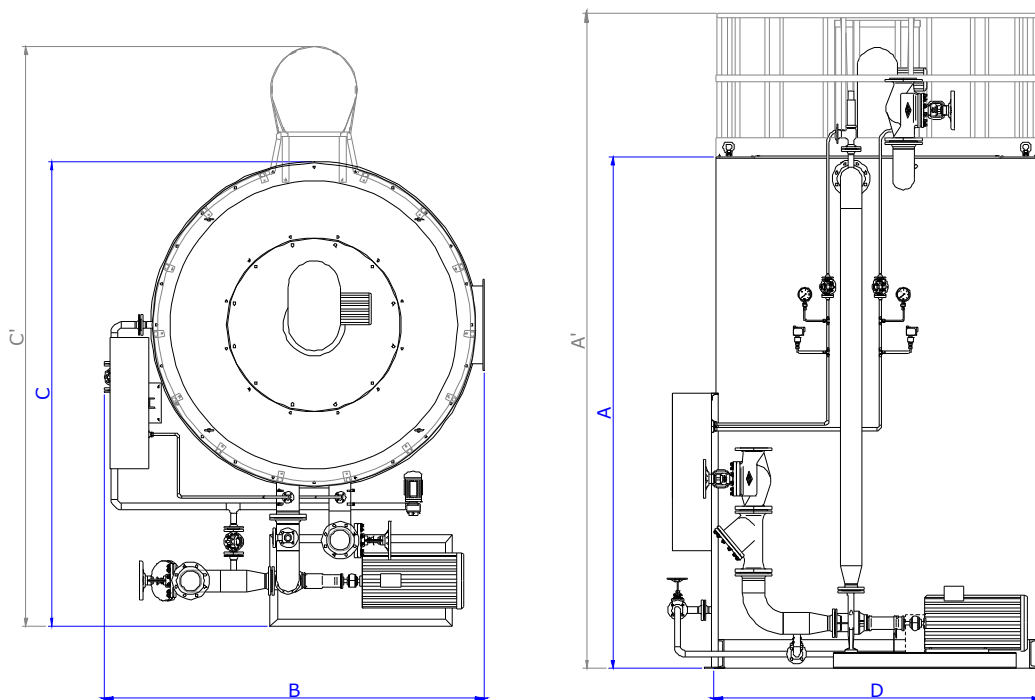
Example:

GFT-**020/xx/xx**



Model

Main characteristics



MODEL	A	B	C	D	A'	C'
GFT-010/20	1500	1525	1585	954	--	--
GFT-020/20	1680	1580	1750	1100	--	--
GFT-040/15	2200	1805	2020	1292	--	--
GFT-040/20	2200	1855	2000	1292	--	--
GFT-060/20	2625	2000	2350	1522	3720	3220
GFT-090/20	3170	2170	2525	1730	4275	3390
GFT-090/40	3170	2075	2525	1730	4275	3390
GFT-130/20	3180	2400	2865	1997	4280	3730
GFT-130/40	3180	2400	2780	1997	4280	3645
GFT-170/20	3875	2700	3160	2200	4980	4030
GFT-170/40	3875	2700	3160	2200	4980	4030
GFT-200/40	4020	2880	3270	2387	5125	4130
GFT-300/40	4715	3130	3515	2554	5820	4375

(mm)

The manufacturer of the equipments has the right to modify their characteristics

P.I. Santiga, Av. Castell de Barberá 31 08210 BARBERÀ DEL VALLÉS – SPAIN

E-mail: comercial@pirobloc.com <http://www.pirobloc.com>

Tel. 00 34 937 189 064 – Fax 00 34 902 908 812

(FT-GFT / v.2) 06/2009