

## THERMAL FLUID HEATERS

### CE LINE

### ELECTRICAL HEATERS



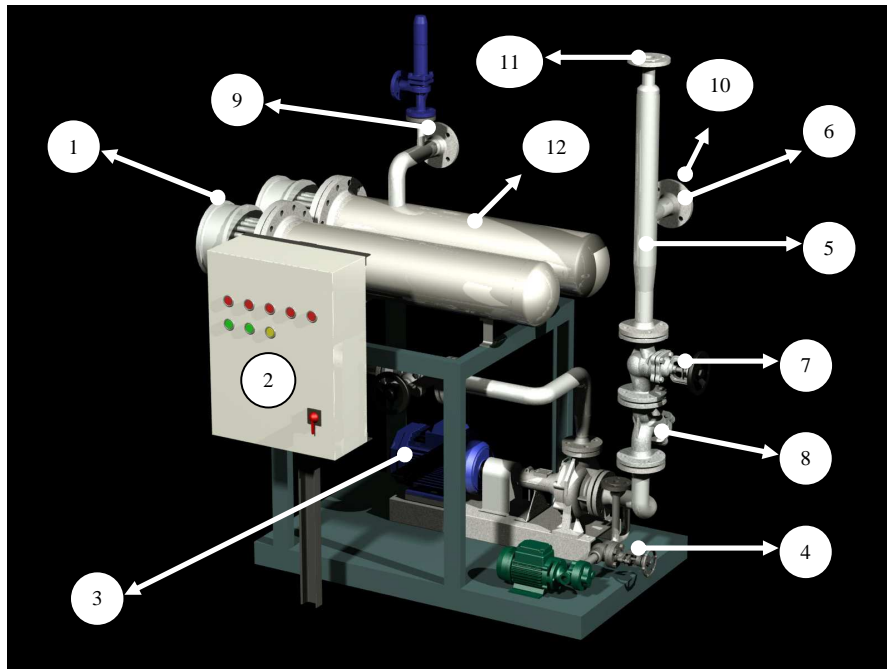
#### Special Models for:

- Control with PLC
- Heating of presses
- Reduced thermal charge
- Explosion-proof execution
- Communication to PC
- Pressurized expansion tank
- Operating temperature till 400 °C
- Power adjustment 0...100%
- ASME design
- Hot water

#### Characteristics

- Powers from 8 to 2500 kW
- Design codes: AD-MERKBLÄTTER, DIN4754, EN-13445
- Marked CE
- Low density: 3,15w/m<sup>2</sup>
- Official tested pressure: 14 bar
- Operating pressure: 7 bar
- Design temperature: 400°C
- Maximal operating temperature: 350°C
- Separated connection box

## Electrical heater scheme

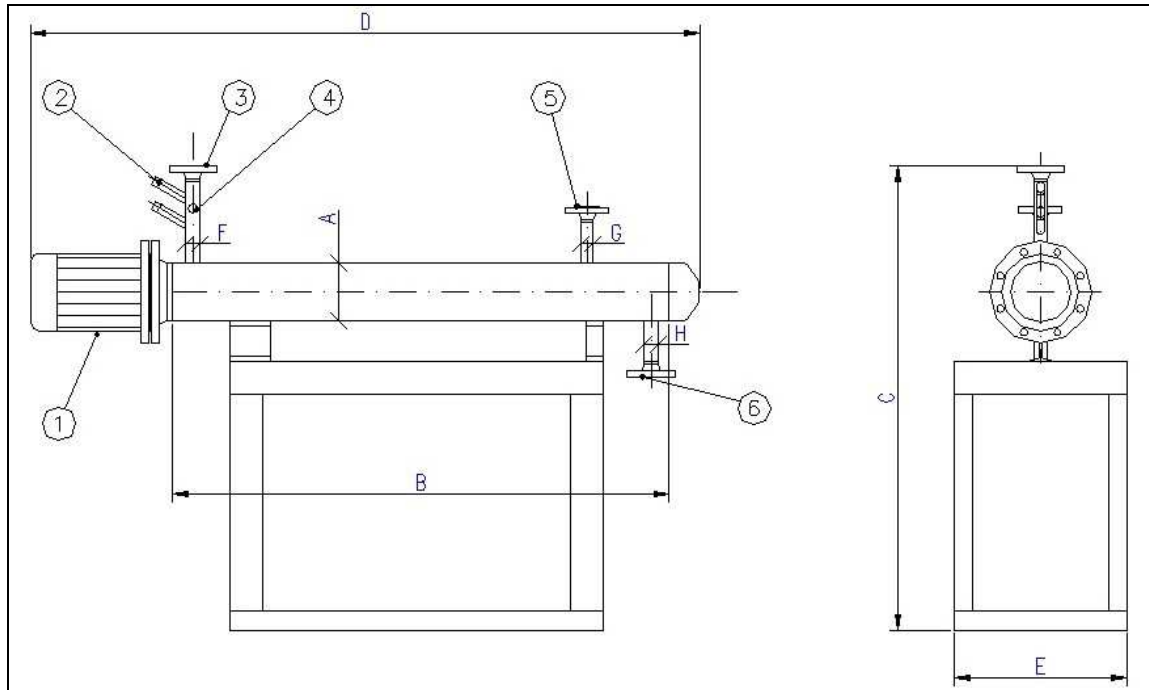


- 1 Electrical resistances
- 2 Electric panel
- 3 Recirculation pump
- 4 Filled/drained pump
- 5 Gas collection bottle
- 6 Security valve
- 7 Interruption valve
- 8 Filter
- 9 Outlet flange
- 10 Flange of return
- 11 Expansion tank flange
- 12 Resistances body with heat insulation

| Model          | Calorific power |      |
|----------------|-----------------|------|
|                | Kcal/h          | kW   |
| <b>CE-24</b>   | 20.500          | 24   |
| <b>CE-41</b>   | 35.000          | 41   |
| <b>CE-48</b>   | 41.000          | 48   |
| <b>CE-54</b>   | 46.000          | 54   |
| <b>CE-81</b>   | 69.500          | 81   |
| <b>CE-85</b>   | 73.000          | 85   |
| <b>CE-96</b>   | 82.500          | 96   |
| <b>CE-108</b>  | 93.000          | 108  |
| <b>CE-120</b>  | 103.000         | 120  |
| <b>CE-240</b>  | 206.000         | 240  |
| <b>CE-360</b>  | 300.000         | 350  |
| ...            | ...             | ...  |
| <b>CE-2500</b> | 2.150.000       | 2500 |

\*Another powers under request.

## Main dimensions



Legend: 1.- Electrical resistance; 2.-Thermowells; 3.- Thermal fluid outlet connexion; 4.-Manometer sweep;  
5.-Security valve connexion; 6.-Thermal fluid inlet connexion

The manufacturer reserves the right to modify the characteristics with the objective to improve the equipment.

| HEATER MODEL  | Vol. (l)   | Nº Resistances    | Dimensions (mm) |      |      |      |      | Connexions |      |      | Category according DEP 97/23 CE |
|---------------|------------|-------------------|-----------------|------|------|------|------|------------|------|------|---------------------------------|
|               |            |                   | A               | B    | C    | D    | E    | F          | G    | H    |                                 |
| <b>CE-24</b>  | <b>17</b>  | --                | Ø139.7-DN125    | 1210 | 1280 | 1720 | 420  | DN25       | DN20 | DN25 | Artic. 3º, ap.3                 |
| <b>CE-41</b>  | <b>34</b>  | --                | Ø139.7-DN125    | 1960 | 1450 | 2645 | 420  | DN25       | DN25 | DN25 | Cat. I, mod. A                  |
| <b>CE-48</b>  | <b>35</b>  | <b>2 x 24 kW</b>  | Ø139.7-DN125    | 1210 | 1280 | 1720 | 780  | DN25       | DN20 | DN25 | Cat. I, mod. A                  |
| <b>CE-54</b>  | <b>36</b>  | <b>2 x 27 kW</b>  | Ø114.2-DN100    | 1960 | 1320 | 2340 | 740  | DN32       | DN20 | DN32 | Cat. I, mod. A                  |
| <b>CE-81</b>  | <b>54</b>  | <b>3 x 27 kW</b>  | Ø114.2-DN100    | 1960 | 1520 | 2340 | 640  | DN40       | DN20 | DN32 | Cat. I, mod. A                  |
| <b>CE-85</b>  | <b>46</b>  | --                | Ø168.3-DN150    | 2460 | 1560 | 2950 | 460  | DN40       | DN25 | DN40 | Cat. I, mod. A                  |
| <b>CE-96</b>  | <b>59</b>  | <b>2 x 48 kW</b>  | Ø219.1-DN200    | 960  | 1350 | 1410 | 800  | DN50       | DN20 | DN50 | Cat. I, mod. A                  |
| <b>CE-108</b> | <b>69</b>  | --                | Ø219.1-DN200    | 1960 | 1560 | 2510 | 460  | DN40       | DN25 | DN40 | Cat. I, mod. A                  |
| <b>CE-120</b> | <b>74</b>  | --                | Ø219.1-DN200    | 2200 | 1350 | 2750 | 460  | DN40       | DN25 | DN40 | Cat. I, mod. A                  |
| <b>CE-240</b> | <b>162</b> | <b>2x 120 kW</b>  | Ø219.1-DN200    | 2200 | 1450 | 2750 | 800  | DN40       | DN25 | DN40 | Cat. I, mod. A                  |
| <b>CE-360</b> | <b>273</b> | <b>3 x 120 kW</b> | Ø219.1-DN200    | 2200 | 1700 | 2750 | 1050 | DN25       | DN25 | DN65 | Cat. I, mod. A                  |

\*Another powers under request.

P.I. Santiga, Av/ Castell de Barberà 31 08210 BARBERA DEL VALLÉS – SPAIN

E-mail: [comercial@pirobloc.com](mailto:comercial@pirobloc.com) <http://www.pirobloc.com>

Tel. 00 34 937 189 064 – Fax 00 34 902 908 812

(FT-CE v.3) 09/2012