

Thermal Fluid electric Heater

CE LINE Electrical Heaters

P.I. Santiga, Av. Castell de Barberà 31 08210
BARBERA DEL VALLES – Barcelona, Spain

E-mail comercial@pirobloc.com
Web www.pirobloc.com
Phone. 34 937 189 064



Characteristics

- › Powers from 8 to 2500 kW
- › Design codes: AD-2000
- › Marked CE
- › Low density: 3 W/cm²
- › Official test pressure: 14 bar
- › Operating pressure: 7 bar
- › Design temperature: 400°C
- › Maximal operating temperature: 350°C
- › Separate connection box
- › 100% efficiency

Applications

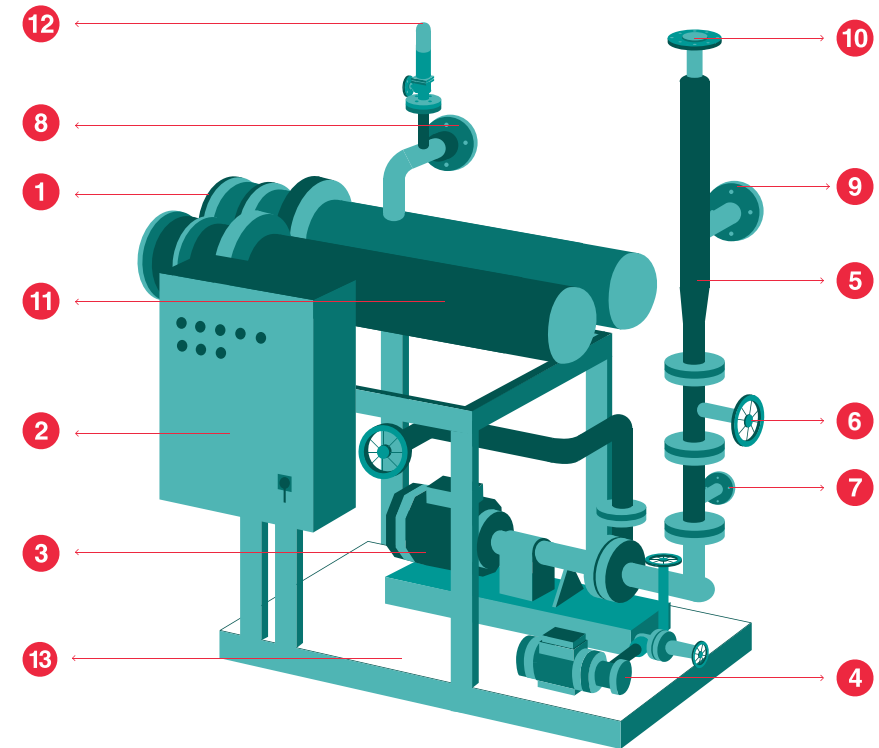
- › Research Centers
- › Universities
- › Solar Energy
- › Mining
- › Presses
- › Reactors
- › Heating asphalt/bitumen
- › Storage tanks
- › Paintings
- › Plastic and rubber
- › Oils and fats
- › Drying processes
- › Evaporators
- › Distillation columns
- › Flexography and rotogravure
- › Etc

Options

- › Control with PLC
- › Heating of presses
- › Reduced thermal charge
- › Explosion-proof execution
- › Communication to PC
- › Pressurized expansion tank
- › Operating temperature till 400 °C
- › Power adjustment 0-100% through SSR
- › ASME design
- › Hot water

Model	Calorific power	
	kcal/h	kW *
CE-25	21.500	25
CE-50	43.000	50
CE-100	86.000	100
CE-200	172.000	200
CE-500	430.000	500
CE-1000	860.000	1000
CE-2500	2.150.000	2500

*Another powers under request.

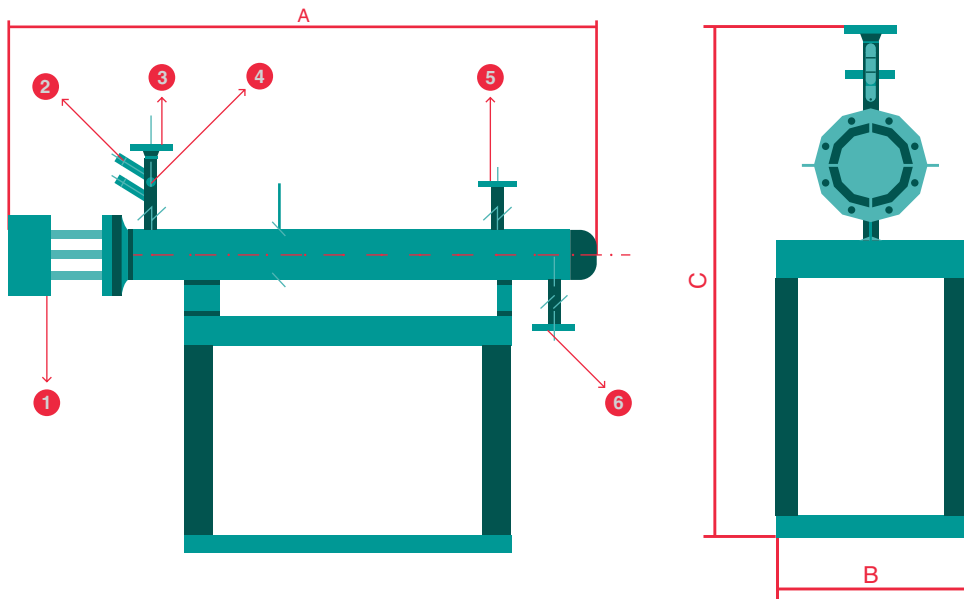


Electrical heater scheme

- | | |
|--------------------------|---|
| 1 Electrical resistances | 8 Outlet flange |
| 2 Electric panel | 9 Flange of return |
| 3 Recirculation pump | 10 Expansion tank flange |
| 4 Filled/drained pump | 11 Resistance body with heat insulation |
| 5 Gas collector bottle | 12 Security valve |
| 6 Interruption valve | 13 Platform |
| 7 Filter | |

Main dimensions

- 1 Electrical resistance
- 2 Thermowells
- 3 Thermal fluid outlet connexion
- 4 Lyre sweep
- 5 Security valve connexion
- 6 Thermal fluid inlet connexion



Id	Resistances	Approximate measures (mm)		
		A	B	C
CE-25	1x25	1965	750	1000
CE-50	1x50	2990	750	1000
CE-100	1x100	2535	800	1000
CE-200	1x200	3610	1200	1200
CE-500	2x250	3615	1500	1800
CE-1000	4x250	3615	1500	1800

The manufacturer reserves the right to modify the dimensions according with execution drawings.

Multiple arrangements

